


HX130 SERIES SWINGAWAY AUGERS

HUTCHINSON 
MAYRATH 





Hutchinson | Mayrath

UNMATCHED PERFORMANCE

Hutchinson | Mayrath is committed to providing farmers with industry leading products. The HX130 is the latest addition to our extensive product line, and features over 75 farm-proven performance enhancements designed to make your job easier. The HX130 swing-away auger features a commercial strength scissor-lift frame, steel trussing and low-profile hopper.

HX130 | 74', 84', 94' lengths | Capacity up to 11,500 bph

HUTCHINSON

FEATURES

EXTENDED WEAR

The HX130 Series features an Extended Wear package that offers abrasive resistant flighting on all areas including the hopper flight, transitional flight, incline tube flight, and lower tube flight.

ENHANCED OPERATION

To ensure proper flight alignment for smooth operation, the HX130 uses square, one-bolt flight connections. The upper flight thrust adjuster balances the pressure between the upper and lower bearings during operation - extending the lifespan of the lower boot bearing. The CV PTO reduces vibration and enhances power transfer to the auger, which increases the unit's lifespan while also saving capacity. The tapered and large boot flight increase the user's convenience with operations from any angle.

REDUCED MAINTENANCE

The HX130 Series provides fast service and maintenance with six accessible service points to the u-joints, chains, bearings, and gearboxes along with external grease zerks on the u-joint end caps. With inspection of tool free areas that include the hopper chain cover, neck transition, boot clean-out and swing head cover, these features deliver quick maintenance.

CORROSION RESISTANT GALVANIZATION

Hutchinson | Mayrath uses a specialized corrosion resistant galvanization on tube housings, for lasting protection and consistent finish. All other parts have a premium powder coat paint for long lasting protection.



OPTIONAL FEATURES

POWER SWING - HYDRAULIC OR ELECTRIC REMOTE

- Two-wheel drive design and large lug tires for maximum traction and balance
- Mounts easily to HX Series low profile hopper
- Minimal height adjustment needed when using different heights
- Redesigned scissor lift to adjust wheel traction

HYDRAULIC POWER SWING

- Hydraulic drive moves the swing hopper
- Convenient tube mounted control valve
- Complete with hydraulic hoses

REMOTE 12V ELECTRIC POWER SWING

- Heavy-duty 12V motor
- Position the hopper from the cab of your truck
- Large "easy grip" remote
- Secondary control on the tube if remote is not available

WORKING LIGHT KITS

LED working lights provide enhanced lighting conditions at the hopper, axle, and tube discharge to the bin during operation in dark hours of the day.

TRANSPORT LIGHT KITS

Improves auger visibility during transportation.

RIGHT-ANGLE DRIVE

The right-angle drive positions the auger at a 90-degree angle from the truck while working in small spaces.

REDUCER-REVERSER

The reducer feature lowers the speed of tractors with 1,000 RMP to 540 RPM, which is required for auger operations.

The reversing feature allows the flight direction to reverse for a quick and easy cleanout and saves time when moving from one commodity to the next. The reverser kit is also available on its own, without the speed reducer.



STEEL TRUSSING & SCISSOR FRAME

Take advantage of the HX130 capabilities with the scissor lift frame and cross members to maximize reach and reduce swaying while the auger is in use. Hutchinson | Mayrath uses commercial strength steel trussing, allowing the auger to be easily positioned and aligned for long-term use.

HOPPER & HOPPER LIFT ARM

The hopper lift arm and hopper can be positioned on the left or right-hand side of the auger to easily unload grain from either side. The hopper features dual flighting that allows the grain to be directed to the center of the hopper, optimizing grain flow to the tapered boot – maximizing capacity and minimizing unload time. The 6" rubber extensions along the edge of the hopper prevents grain from splashing.

HX130

AUGER SPECIFICATIONS

	HX13-74	HX13-84	HX13-94
TUBING GAUGE	12 GA		
TUBE CONNECTORS	Heavy Duty ¼" Angle Flange		
MAIN FLIGHTING	11 ¾" OD x ¼" Stretched + Welded (Extended Wear at Critical Transfer Points)		
UPPER BEARING	4 Bolt Flange		
LOWER BEARING	4 Bolt Flange		
TUBE TRUSSING	¾" Aircraft Type Galvanized Steel Cable	2 ½" Steel Tube	
HYDRAULIC LIFT	Two 4" Single Acting Cylinders	Two 4 ½" Single Acting Cylinders	
UNDERCARRIAGE	4" x 10" Scissor-Lift		
AXLE	4" x 4" Square Tubing		
HUB	6 Bolt Agricultural Type		
TIRES	16" TRF		
PTO SHAFT	35E Constant Velocity with ¾" Shear Bolt	55E Constant Velocity with 2-Bolt Shear	
PARKING JACK	5000 LB Side Wind		
SPROCKET + CHAIN	Hardened Tooth Sprocket with HD #80 Chain		
LOW PROFILE HOPPER HEIGHT	60" Length x 48" Width x 10 ½" Height with Flat Free Tires		
PSI REQUIRED TO RAISE AUGER	1500 PSI	1950 PSI	2050 PSI
HP REQUIRED (WITH DRY WHEAT)	125 HP	135 - 155 HP	145 - 165 HP
WHEEL TREAD	146"-182"		
TRANSPORT HEIGHT	11' 7"	12'	12'

HEIGHT, REACH & WHEEL SPECIFICATIONS

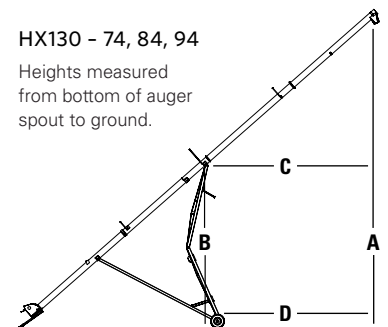
	HEIGHT (A)			HEIGHT (B)			REACH (C)			REACH (D)		
	LOWERED	HALFWAY	RAISED	LOWERED	HALFWAY	RAISED	LOWERED	HALFWAY	RAISED	LOWERED	HALFWAY	RAISED
X130-74	9' 2"	25' 8"	48' 8"	38' 7"	36' 7"	28' 1"	4' 6"	12' 7"	24' 4"	38' 7"	36' 9"	29' 7"
X130-84	9' 5"	30'	55'	43' 9"	41'	34'	4' 6"	15' 9"	27' 5"	43' 9"	41' 3"	34' 8"
X130-94	9' 2"	34' 4"	60' 1"	49'	46' 3"	37' 7"	4' 6"	17' 1"	30'	49'	46' 6"	38' 5"

Hutchinson | Mayrath is an AGI brand.

AGI is a leading manufacturer of grain, seed, feed, food and fertilizer handling, blending, storage and conditioning equipment. Our brands are amongst the most recognized in the industry. The AGI product catalog includes portable handling equipment (augers, belt conveyors, grain vacs), permanent handling systems (bucket elevators, enclosed belt conveyors, chain conveyors, structural) and storage systems (aeration, drying, bins/silos, monitoring) that service various sectors for on-farm and commercial operations.

HUTCHINSON 
MAYRATH 

PO Box 629, 74, Clay Center, Kansas 67432
 785.632.2161 | hutchinson-mayrath.com



0218-2000

AGI 