

"EN MASSE" ***CHAIN CONVEYOR***

UNION IRON 

WE
OFFER
SOLUTIONS

14

SERIES
CHAIN
CONVEYORS

“ Durable, dependable and efficient handling capacities for a wide variety of materials with minimum product degradation. Capacities from 3,000 - 13,000 bushels per hour. ”

20

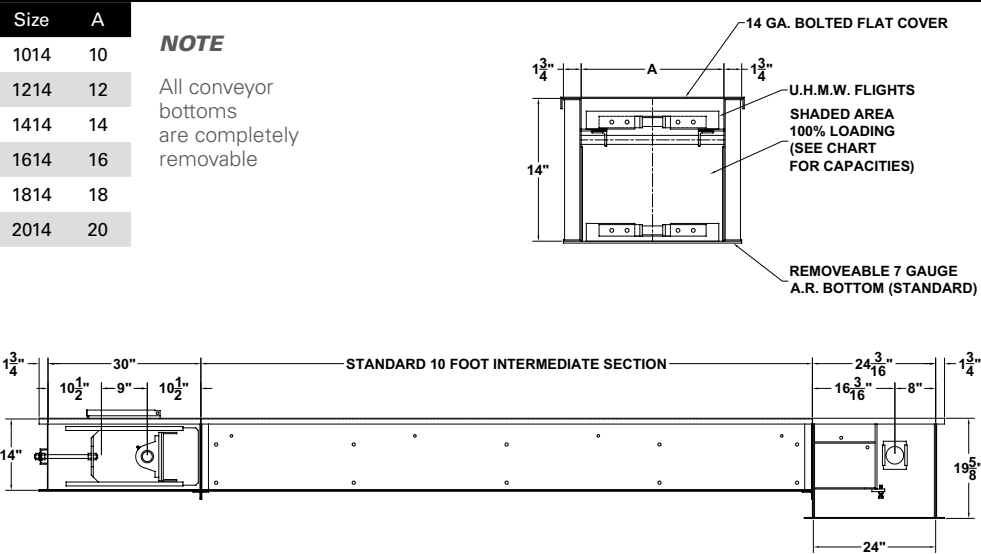
SERIES
CHAIN
CONVEYORS

“ Durable, dependable and efficient handling capacities for a wide variety of materials with minimum product degradation. Capacities from 9,000 - 28,000 bushels per hour. ”



STANDARD FEATURES

- Hardened tooth sprockets
 - All pillow block bearings
 - Shafts sized to application
 - UHMW seals
 - 1-Intermediate inlet & 1-head discharge
 - Screw type take ups
 - 11 GA. steel construction
- Powder Coat finish
 - 7 GA A.R. removable bottoms
 - Heavy welded steel conveyor chain
 - Inspection doors on head & tail sections
 - Cover lipped for excellent seal
 - Cover may be flat or lipped design with quick screw clamps or bolted on



OPTIONS

A.R. steel bottom and side liners from 10 GA. - 3/8"

Bend section/incline conveyors

Split sprockets

Hold down return rails or split pan design for inclined conveyors

Limit switches

Hot dipped galvanized option available

SPECIAL FEATURES

Heavy welded steel conveyor chain with welded attachments and 3/8"- 5/8" UHMW flights assembled and placed in intermediate sections.

Drives sized for application and mounted to head section.

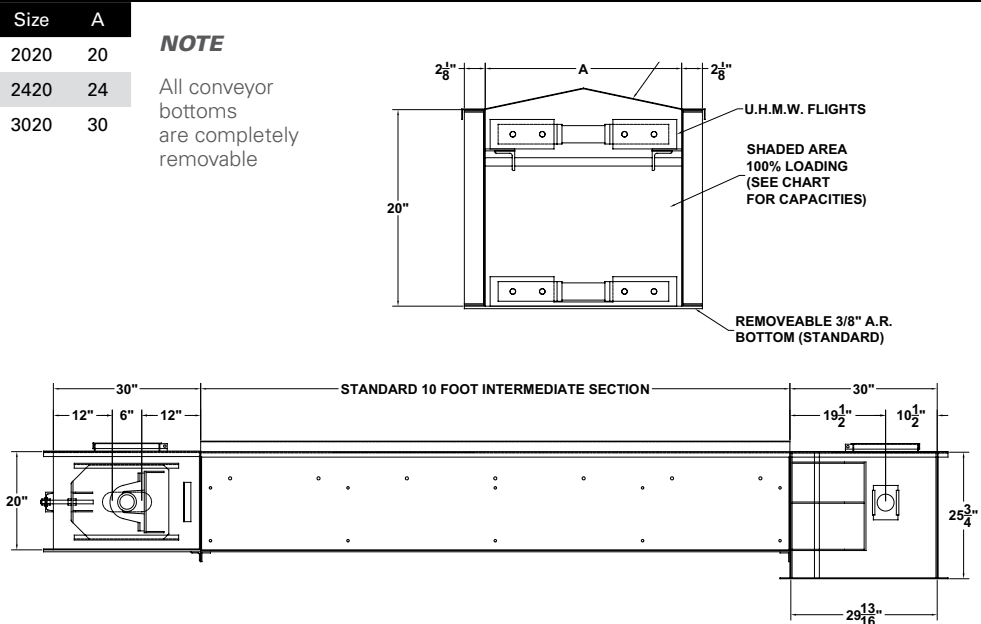
Drag leg attachment plates (1 set per 10' of conveyor length).

NOTES Capacities in MT/hr are based on wheat at 0.77 MT/m³



STANDARD FEATURES

- Hardened tooth sprockets
 - All pillow block bearings
 - Shafts sized to application
 - UHMW seals
 - 1-Intermediate inlet & 1-head discharge
 - Screw type take ups
 - 11 GA. steel construction
- Powder Coat finish
 - 3/8" A.R. removable bottoms
 - Heavy welded steel conveyor chain
 - Inspection doors on head & tail sections
 - Cover lipped for excellent seal
 - Cover may be flat or lipped design with quick screw clamps or bolted on



OPTIONS

A.R. steel bottom and side liners from 10 GA. - 3/8"

Bend section/incline conveyors

Split sprockets

Hold down return rails or split pan design for inclined conveyors

Limit switches

Hot dipped galvanized option available

SPECIAL FEATURES

Heavy welded steel conveyor chain with welded attachments and 3/8"- 5/8" UHMW flights assembled and placed in intermediate sections.

Drives sized for application and mounted to head section.

Drag leg attachment plates (1 set per 10' of conveyor length).

NOTES Capacities in MT/hr are based on wheat at 0.77 MT/m³

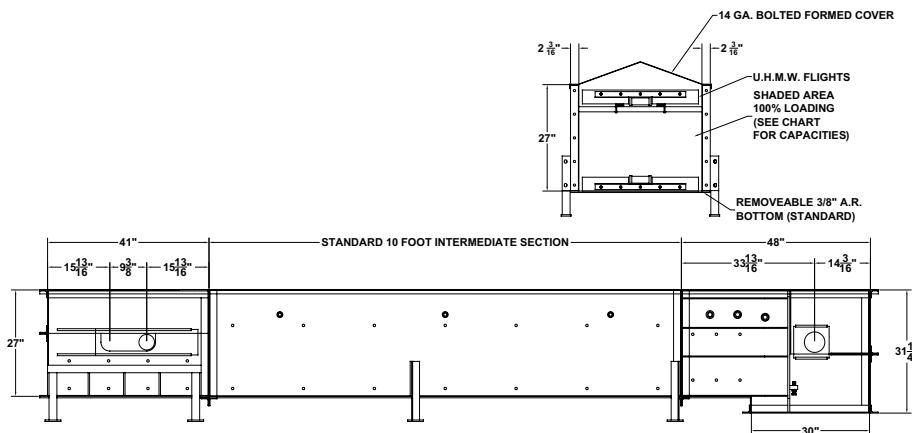
27

SERIES CHAIN CONVEYORS

HIGH CAPACITY CHAIN CONVEYORS

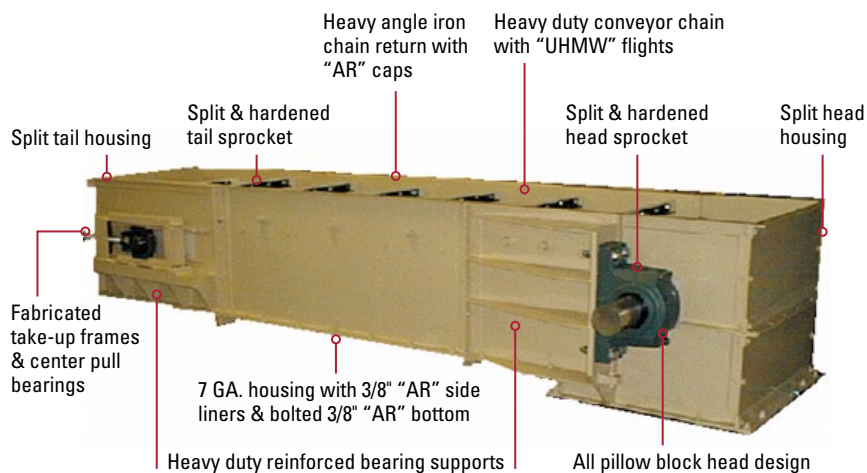
Union Iron's "Mega" Conveyor is a heavy duty chain conveyor designed to handle the most severe applications for many years of trouble-free service.

Conveyor sides and bottoms are equipped with 3/8" plate A.R. steel liners for extended life. 19 1/2" tall side liners are standard construction. All components are jig welded to assure interchangeability, further insured by strict Union Iron inspection.



Size	Bu/hr @ 1 FPM	Bu/hr @ 150 FPM	Bu/hr @ 200 FPM
24"	161	24,140	32,140
30"	201	30,130	40,173
32"	214	32,140	42,850
36"	241	36,160	48,210
42"	281	42,180	56,250

Size	MT/hr @ 0.005 m/s	MT/hr @ 0.76 m/s	MT/hr @ 1.02 m/s
24"	4.4	655	872
30"	5.5	817	1,090
32"	5.8	872	1,163
36"	6.5	981	1,308
42"	7.6	1,144	1,526



“Capacities range from 15,000 - 60,000 bushels per hour.”

UNION IRON

Union Iron is an AGI brand.

AGI is a leading manufacturer of portable handling equipment (augers, belt conveyors, grain vacs), permanent handling systems (bucket elevators, enclosed belt conveyors, chain conveyors, structural) and storage systems (aeration, drying, bins/silos) that service the grain, seed, feed, food and fertilizer sectors both on farm and for commercial operations.

3550 E. Mound Road Decatur, IL USA 62526
1.800.333.5148 sales@unioniron.com unioniron.com

AGI